

A Message from the Managing Director

Dear Valued Readers,

How fast time flies. Perhaps it has flown by faster for us as we have been kept busy with researching and developing new stem cells banking services to offer you. As you read through this newsletter, you will find that we have as comprehensive a range of stem cells banking services as it gets in the region. With this range, we have progressed from only offering stem cells storage for infants to also making it possible for adults to store stem cells.

Our laboratory has also achieved being accredited with MS ISO 15189 by the Department of Standards Malaysia Skim Akreditasi Makmal Malaysia (SAMM) for Medical Testing on the 29th of July, 2009. The accreditation ratifies our strengths in our laboratory practices that we stringently believe in.



Moving on, we commit not to rest on our laurels as we continue to conduct stem cells research and development to be able to provide better, accurate and innovative services. We hope that you allow us to play an active role in addressing your family's health security concerns.

On another note, we are also pleased offer additional benefits to those who sign up with us for cord blood stem cells banking, giving you the extra protection for your investment:



CryoCare Enhanced covers transplantation costs for your baby and its natural siblings, and in addition, the acquisition of a fully-matched stem cell unit should the stem cells stored with CryoCord is found totally not viable.



CryoMove guarantees against the loss or non-viability of stem cells during transportation to and from CryoCord's Storage Facility.

Last but no least, in light of the festive season, I would like to wish all readers Selamat Hari Raya and Happy Deep-avali and catch you in our next Newsletter!

Sincerely,

James Then
Managing Director

Introducing
amnioPlas+
Frozen Amniotic Membrane

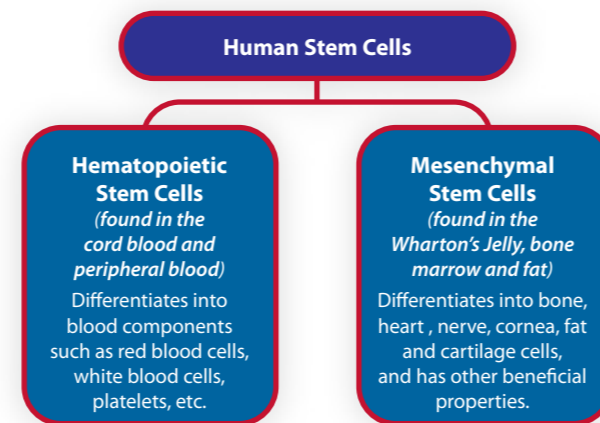
- Frozen amniotic membrane for ophthalmology
- Size - 3cm x 3cm
- Indicated for use as graft or dressing
- Not irradiated to preserve growth factors
- Enhances healing and desired outcome



PROMISE OF A NEW DAWN

More Stem Cells Storage Options for More Security

Did you know? Stem cells are not just stem cells. There are different types of stem cells. Research in the stem cell industry identifies 2 different kinds of stem cells that are applicable in treatment today: Hematopoietic Stem Cells (HSCs) and Mesenchymal Stem Cells (MSCs).



Hematopoietic Stem Cells

HSCs are multipotent stem cells that has the potential to differentiate mainly into blood components such as red blood cells, white blood cells, platelets, etc. They can be harvested from cord blood and peripheral blood.

Mesenchymal Stem Cells

MSCs are also multipotent stem cells that has the potential to differentiate into a wide range of cells and tissues such as bone, heart, nerve, cornea, fat and cartilage. They can be harvested from the Wharton's Jelly, bone marrow and fat.

Malaysians have had the opportunity to store their newborn's cord blood stem cells for some time now. With CryoCord's lead in offering more options to store more than just cord blood stem cells, you have the opportunity to have more security for the whole family.

Stem Cells Banking for Infants



Cord blood stem cells, which are predominantly HSCs, are the key to building blocks of the human blood and immune system. HSCs have the potential to generate blood cells and cells of the human immune system. These cells are less prone to develop Graft Versus Host Disease (GVHD) because they are more primitive in nature, hence the chance for rejection is less compared to stem cells harvested from adults.



The umbilical cord's Wharton's Jelly holds precious MSCs at a more primitive state, hence would be able to withstand more expansion and would be more versatile. These stem cells have been found to be very promising as it has beneficial properties that HSCs may have restrictions in, besides being able to improve engraftment of HSCs (such as cord blood stem cells) and are unlikely to trigger cellular rejection.

Stem Cells Banking for Adults



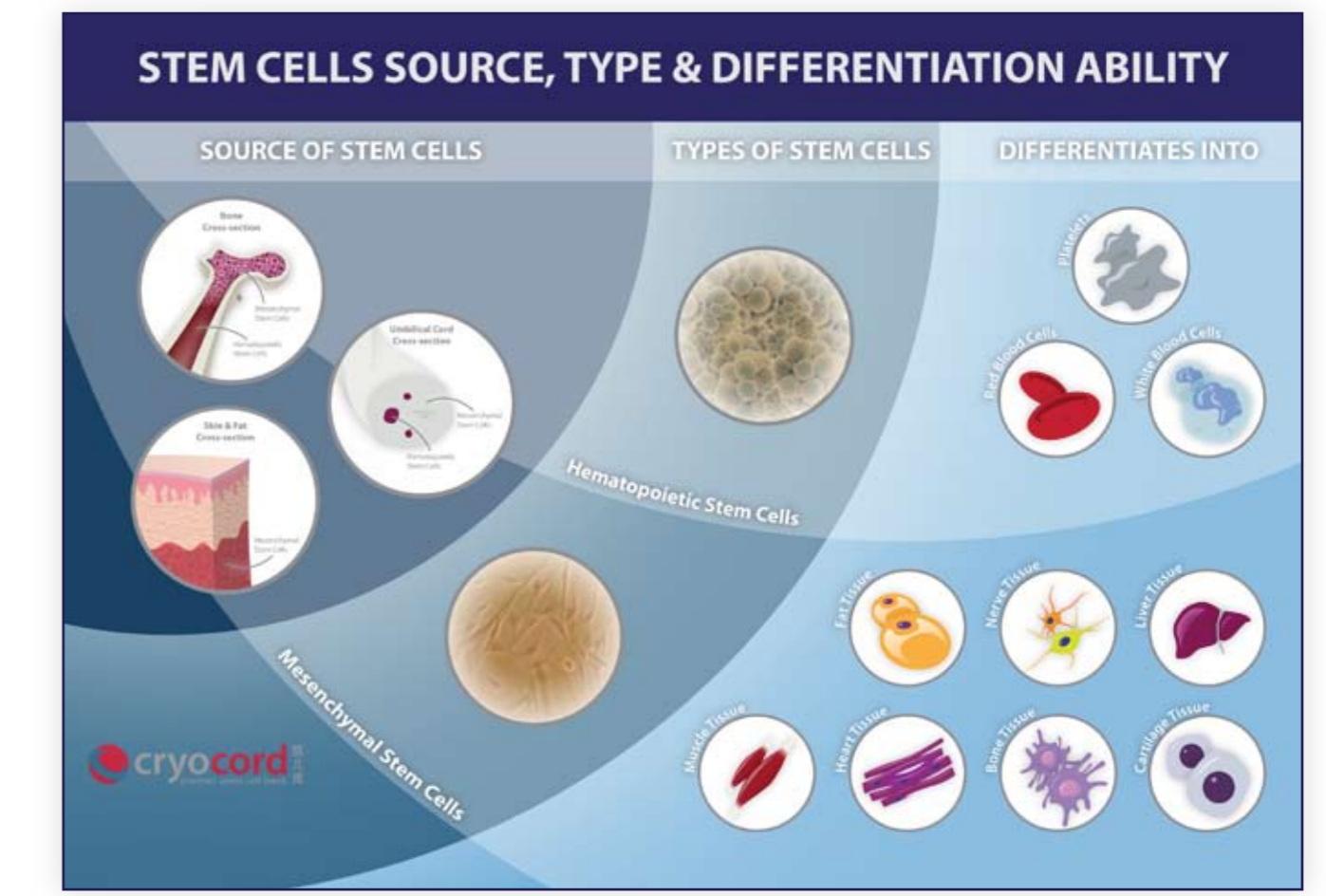
It has been found that adipose tissue (fat tissue) contains MSCs. These MSCs are ideally harvested during liposuction, where instead of discarding the fat collected, the fat is brought back to the laboratory for MSCs isolation and expansion. Although it is possible that the adipose-derived MSCs can be used to treat a multitude of diseases, they are primarily more suited for cosmetic indications.



The bone marrow has been identified as one of the best sources of harvesting stem cells from adults, through bone marrow aspiration (BMA). The BMA process is a low-risk, invasive procedure usually performed at the back of the hipbone. MSCs that reside in the spongy bone are extracted from the bone marrow, where the half-day procedure leaves a very small, negligible scar on the back.



Peripheral blood harvested from the circulating blood stream, much like umbilical cord blood, contains predominantly HSCs. The presence of stem cells in peripheral blood is indirectly induced through the introduction of Granulocyte Colony Stimulating Factor (GCS-F) into the blood stream. Stem cells harvested this way are known as peripheral blood stem cells (PBSC).



CordBlood



CordMSCs



AdiMSCs



MarrowMSCs



AdultPBSCs



amnioPlas+